

GENERAL FEATURES

Since 1905, G&W has provided custom power solutions to utilities and electric power users around the world. G&W has a wide selection of reliable, quality switching and fault interrupting products to meet the most stringent customer requirements. Whether the application involves load switching, line sectionalizing, fault interruption or distribution automation, G&W can provide a solution for distribution system switching and protection. When specifying switchgear, consider these features:

MAXIMUM OPERATOR SAFETY

SF₆ gas is a nontoxic, nonflammable switching dielectric. Dead-front switch construction eliminates any exposed live parts. Spring-assisted mechanisms assure quick-make, quick-break operation. Viewing windows permit visual verification of open or closed contacts. Tamper-resistant enclosures utilize penta-head bolts and padlocking provisions. Motor actuators are available permitting remote operation. The result is maximum operator safety.

MINIMAL MAINTENANCE

G&W SF₆ switches are corrosion-resistant, totally sealed and factory filled. No more field adjustments of critical contact areas or concerns with environmental contamination or intrusions. A periodic check of the pressure gauge is all that is required. Galvaneal type enclosures assure maximum corrosion resistance.

APPLICATION VERSATILITY

Multi-way Configurations — Switches are available for either two-position or three-position (incorporating an integral ground, tie or test position) switching. Single or multiple sources can feed multiple loads. Bus tie configurations are available permitting multiple sources to feed different loads within the same switch.

Mounting Flexibility — Horizontal and vertical configurations are available with operating apparatus accessible from the front, top or side compartments. Enclosures are removable for easy cable installation or field replacement.

Bushing Variety — Many bushing styles are available including an exclusive disconnectable style permitting field changeout. Cable entry can be bottom, front, back or side.

Visible Break — Load break switches can incorporate a visible break of all three phases.

Overcurrent Protection — Fusing or electronically controlled, resettable vacuum interrupters are available.

Smart Grid / Lazer Solutions — Complete SCADA distribution automation and Smart Grid solutions are available including automatic transfer. G&W's Lazer distribution automation systems provide pre-engineered, time-proven solutions for automatic power restoration.



LOAD AND FAULT INTERRUPTING SWITCHES

PUFFER VACUUM INTERRUPTERS

G&W load and fault interrupting combination switches combine the total cost and operating benefits of fuseless, electronically controlled, resettable overcurrent protection with the safety and maintenance benefits of a totally sealed, dead-front, SF₆ insulated device. The switches are designed for automatic single or three phase fault interruption with manual load break capabilities for systems through 35kV, 630A continuous. Ratings to 900A continuous are available on certain models. Single side access designs are available for confined space applications.

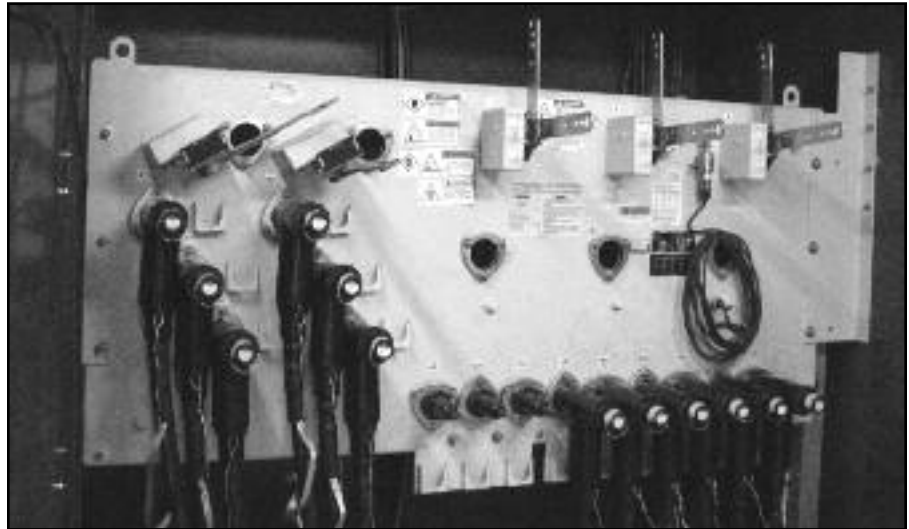
FEATURES

Operator Safety — G&W combination switches are totally sealed, dead-front and insulated with nonflammable, nontoxic SF₆ gas. Operators are spring assisted for positive quick-make, quick-break operation. A trip-free mechanism permits interruption independent of the operating handle if closing into a fault. Viewing windows permit visible indication of interrupter contact position.

Minimal Maintenance — No more routine inspections or dielectric testing as with oil gear. No more contact contamination, rodent problems or insulator maintenance as with air gear. A periodic check of the gas pressure gauge is all that is required.

Three Phase Tripping — No more single phasing problems. Simultaneous three phase tripping is available through the electronics and with three phase operating handles for manual operation and reset.

Protection Curve Compatibility — G&W solid state electronic controls permit extremely accurate, consistent protection curve characteristics compared to conventional fuses. The exclusive controls can emulate the



▲ PNI single side access switch.

most common time current curves (TCC) for power fuses, relays and fuse links (oil fuse cutouts). Optional controls can provide ground trip, inrush restraint and adjustable time delay capability.

Fully Tested — Switches are designed and tested per applicable sections of IEEE C37.72, C37.74 C37.60, and IEC 265 standards.

APPLICATIONS

G&W combination switches provide a direct replacement for power fused air and vacuum-in-oil switchgear. Some ideal applications include:

Transformer and Motor Protection — The three phase trip feature and high continuous current make PVIs ideal for protecting three phase motors and transformers through 600A continuous.

Loop and Tap Switching — Standard 630A and optional 900A loop switching is accomplished using the latest puffer technology. Tap switching through 630A and up to 25kA symmetric fault protection is accomplished using resettable, electronically controlled vacuum interrupters. The vacuum interrupters also function as load break switches.

Automatic Transfer — For critical load applications, switches can be supplied with an automatic transfer control package to provide automatic transfer from one source to another to minimize downtime.

Smart Grid / Lazer Solutions — Switches can be supplied with motor actuators on both the line and load side providing remote control capability. Various control packages including portable controls are available.

For Smart Grid applications, G&W works with the top control manufacturers of the industry, including Schweitzer and GE, to match the right control for the job. For automatic power restoration, G&W's Lazer solution provides a pre-engineered, field proven system which can be pre-assembled and factory tested prior to shipment.

Metalclad Switchgear Replacement — Front access designs can provide up to a 900A rated main bus with up to six 25kA symmetric protected load ways for a compact, economical alternative to metalclad and metal enclosed line-ups. All switches can be equipped with SEL relays, providing flexibility, as well as complete remote monitoring and control capabilities.

THREE POSITION LOAD BREAK SWITCHES

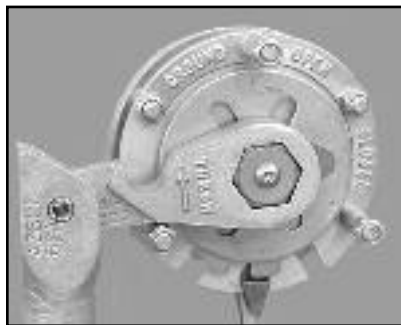
THREE POSITION LOAD BREAK, FRONT ACCESS, T-RP STYLE

(Close-Open-Ground)

An integral ground position within the switch tank permits safe and easy grounding of the cable circuit without having to disconnect elbow or other cable entrance connections. Switching to ground is accomplished through the simple throw of the operating handle without having to de-energize other circuits through the switch. This feature is beneficial for applications where cable movement needs to be minimized. Ground stops with padlocking provisions help assure proper operation to the desired position.

Rotary Puffer (RP) Ratings

Maximum design voltage,
 kV15.5.....2738
 Voltage class,
 kV152535
 Impulse level (BIL),
 kV110.....125.....150
 One minute withstand,
 AC kV356070
 One minute withstand,
 Production test rating
 AC kV344050
 15 minute withstand,
 DC kV5378103
 Continuous and load break current,
 Amps630.....630.....630
 Momentary current,
 kA asym404040
 Fault-close current, (3 times)
 kA asym323232
 One second current
 kA sym252525
 Mechanical endurance,
 operations20002000 ..2000



One-line Diagram (Horizontal)	Voltage Class (kV)	Mom. (kA) asym.	Catalog Number	Approximate	
				Width in. (mm)*	Wt. w/SF ₆ lbs (kg)

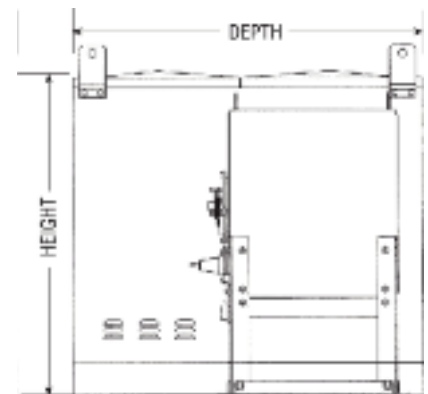
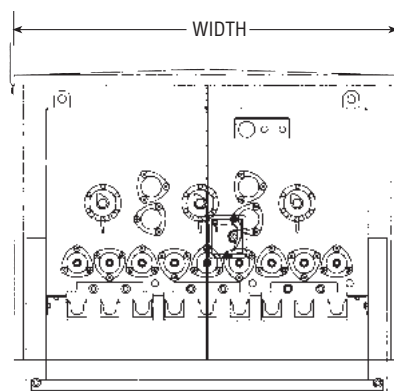
T-RP STYLE (GROUND SWITCHES)

	15	40	T21-376F-40RP	45 (1143)	1400 (636)
	25	40	T21-386F-40RP	45 (1143)	1400 (636)
	35	40	T21-396F-40RP	45 (1143)	1400 (636)
	15	40	T33-376F-40RP	60 (1524)	1600 (714)
	25	40	T33-386F-40RP	60 (1524)	1600 (714)
	35	40	T33-396F-40RP	60 (1524)	1600 (714)
	15	40	T44-376F-40RP	75 (1905)	2100 (953)
	25	40	T44-386F-40RP	75 (1905)	2100 (953)
	35	40	T44-396F-40RP	75 (1905)	2100 (953)
	15	40	T55-376F-40RP	90 (2286)	2300 (1044)
	25	40	T55-386F-40RP	90 (2286)	2300 (1044)
	35	40	T55-396F-40RP	90 (2286)	2300 (1044)
	15	40	T66-376F-40RP	105 (2667)	2750 (1250)
	25	40	T66-386F-40RP	105 (2667)	2750 (1250)
	35	40	T66-396F-40RP	105 (2667)	2750 (1250)

*Enclosure depth = 51" (1448mm), height = 49" (1245mm).

For typical specifications, go to www.gwelec.com.

For contact principle, see page 36.

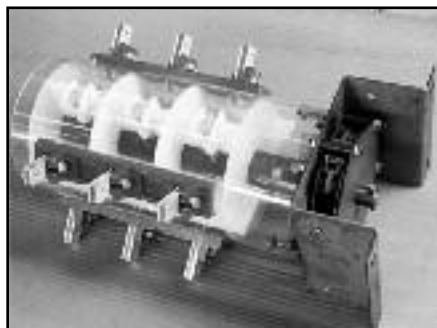


◀ Multi-position operator and removable handle.

CONTACT PRINCIPLES

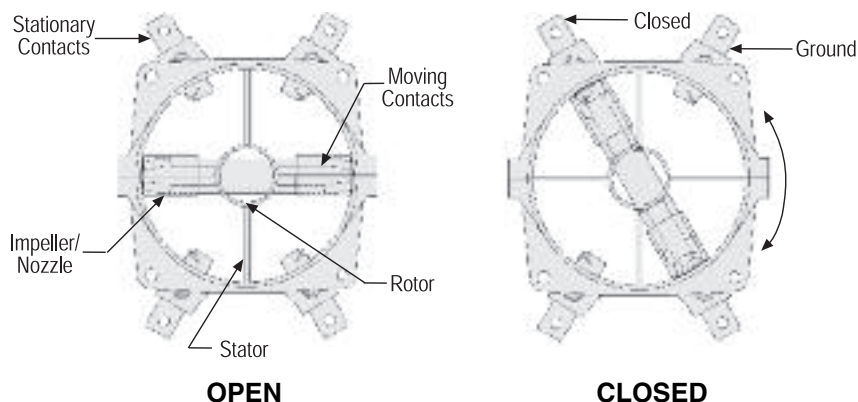
THREE POSITION, ROTARY PUFFER STYLE

For systems through 35kV, 630A continuous current with 40kA asym. momentary, 32kA asym. close into fault, and 25kA sym. one second current; rotary puffer (RP) style switches are used. G&W's multi-position spring operator permits an integral third switching position to increase the application capability over conventional two position switches. Three position switches combine increased switching flexibility with compact construction.



▲ Three position rotary puffer mechanism.

THREE POSITION, ROTARY PUFFER CONTACT PRINCIPLE



A. The stationary contacts and the multi-chamber rotor (an assembly of interlocking parts which form a rotational framework including moving contacts) are housed in a clear cylindrical shell. The stationary contacts are supported independent of the cable entrance bushings, eliminating possible misalignment resulting from tank deflections. Tank deflections are caused by normal tank pressure variance due to ambient temperature fluctuations. Each rotating contact simultaneously disengages from two stationary contacts, providing two break points per phase. This provides improved interrupting capability as compared to single break contact systems.

B. As the rotor tube assembly turns to disengage the moving contact from the stationary contacts, dielectric media (SF_6 gas) is compressed between the impeller and stator. The shell, phase barrier and rotor tube also act to confine the gas for proper compression and flow. The compressed SF_6 gas is directed through the nozzle into the arc zone. The SF_6 flows (is puffed) across the contacts and around the arc established by the separating contacts, cooling the arc over the length of the nozzle. The cooling action is increased by the higher pressure (due to compression) and the flow of gas which constantly provides a supply of cool SF_6 into the arc zone.

C. At current zero, the temperature of the arc is reduced to the point of deionization. The SF_6 gas rapidly recovers dielectric strength withstanding the system recovery voltage and preventing re-ignition of current across the contacts.

D. As the rotor tube assembly turns to engage the moving contact with the stationary contacts, the impeller induces a flow of SF_6 gas between the contacts to minimize pre-strike.

ACCESSORIES AND OPTIONS



3-1/C, 600A QUIK-CHANGE APPARATUS BUSHINGS

Cable entrance bushings can be damaged at any time due to improper handling, accidental shifting during shipment, elbow failure or even normal wear and tear. In the case of SF₆ gas insulated switches where the tank is totally welded, conventional bushing replacement means sending the switch back to the factory for repair. G&W's exclusive Quik-Change Disconnectable Bushing permits quick, easy field replacement without having to open the switch tank.

Bushings are designed to IEEE 386 standards with standard interface accepting conventional elbow style connectors and include an aluminum conductor with 5/8"-11 aluminum threaded stud and aluminum single hole pad (**elbows must be ordered separately**). Copper studs are available. For bottom entry switches, recommended switch frame height is 42" for all voltages.



3-1/C, 600A VOLTAGE SENSING BUSHINGS

G&W's Voltage Sensing Bushing (VSB) system is a temperature compensated, built-in, voltage measuring system that eliminates the need for PTs when three phase analog voltage monitoring is required. Compared to potential transformers, the VS bushing system offers these benefits:

- Significant cost savings
- Cleaner, less cumbersome installation
- Less space required
- Fewer add-on components which could potentially fail
- Installed and tested prior to shipment
- Can be field calibrated
- One digital output per way for threshold voltage detection



The VS bushing system utilizes a capacitively coupled screen which is embedded within the epoxy bushing. The low energy output of the screen is amplified by integral circuitry, resulting in a 0-120 VAC analog output suitable for direct connection to any relay, IED or RTU. The circuitry incorporates built-in calibration and temperature compensation which improve accuracy.

Bushings are designed to IEEE 386 standards with standard interface accepting conventional elbow style connectors and include an aluminum conductor with 5/8"-11 aluminum threaded stud and aluminum single hole pad (**elbows must be ordered separately**). Bushings are bolt-on style. Copper studs are available. For bottom entry switches, recommended switch frame height is 42" for all voltages.

SPECIFICATIONS

Operating temperature:

-40°C to +65°C

Input voltage range (phase-to-phase):

10.7kV - 38kV

Nominal output voltage: 120 VAC

Analog voltage outputs: 3 or 6

Number of digital outputs: 1 or 2

Digital pick-up voltage:

90% of Vnom (on all phases)

Digital drop-off voltage:

75% of Vnom (on any phase)

Maximum burden (per output): 0.06VA

Voltage accuracy:

+/- 2% from 0°C to 65°C and +/- 5% from -40°C to 0°C.

Voltage signal delay: 1/2 cycle max



3-1/C, 600A / 900A APPARATUS BUSHINGS

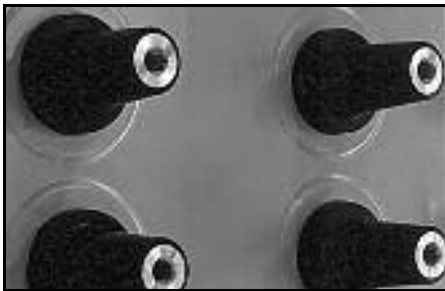
Bushings are designed to IEEE 386 standards with standard interface accepting conventional elbow style connectors and include an aluminum conductor with 5/8"-11 aluminum threaded stud and aluminum single hole pad for a 600A rating (**elbows must be ordered separately**). A copper conductor is available which extends the continuous current rating to 900A. For bottom entry switches, recommended switch frame height is 42" for all voltages. Welded flange bushings are available.

ACCESSORIES AND OPTIONS



3-1/C, 200A DEEPWELL BUSHINGS

Bushings are designed to IEEE 386 standards with standard interface accepting deadbreak or loadbreak inserts and conventional elbow connectors (**inserts and elbows must be ordered separately**). A copper conductor is standard. For bottom entry switches, recommended switch frame height is 42" for all voltages. Welded flange bushings are available.



3-1/C, 600A APPARATUS BUSHINGS

WELDED FLANGE STYLE

Bushings are designed to IEEE 386 standards with standard interface accepting conventional elbow style connectors. Bushings include a stainless steel flange and an aluminum conductor with 5/8"-11 aluminum threaded stud. **Elbows must be ordered separately**. 200A deepwell welded flange bushings are also available.



3-1/C, 600A UNIVERSAL BUSHINGS

The combination Universal Cable End and Universal bushing provides an extremely versatile interface between cable and equipment for easy connecting, disconnecting, and isolating of distribution cable circuits. End caps for both bushing and splice module permit dead-ending of the cable and equipment for fast cable sectionalizing if required.

Universal bushings are designed to accept G&W universal bushing cable ends (**G&W Universal bushing cable ends must be ordered separately. See chart below**). An aluminum conductor and aluminum single hole pad is standard. For bottom entry switches, recommended switch frame height is 36" for all voltages. Hi-pot test kits are available.

NOTE: Universal bushings can accept up to two G&W Universal bushing cable ends per phase. For applications requiring this feature, consult factory.

UNIVERSAL BUSHING CABLE ENDS (PER PHASE)

Complete cable data required before order can be processed.

Configuration	Catalog Number	
	15.5kV	27kV
Terminate 1 cable per phase	15CE	27CE
Terminate 2 cables per phase	15CE-CE	27CE-CE
Dead End Kit	15DCE	27DCE
Change 1 cable per phase to 2 cables per phase*	151V2	271V2
Change 2 cables per phase	152V1	272V1

**Kit includes second cable end (CE) and hardware necessary for connection.*

ACCESSORIES AND OPTIONS

For standard components, refer to typical specifications at www.gwelec.com under Support.

Gas Pressure Gauge and Fill Valve (Standard)

The pressure gauge is a “GO-NO-GO” style which is color coded to simplify verification of proper operating conditions. A Schraeder type fill valve permits refilling in the field. The gauge and fill valve are made of brass for corrosion resistance. Both components are protected by a steel guard.



▲ Pressure gauge and fill valve

Temperature Compensated Gas Density Gauge (Optional)

measures internal tank gas density for maximum precision of switch operating conditions. The gauge is colored coded to simplify reading by operating personnel.



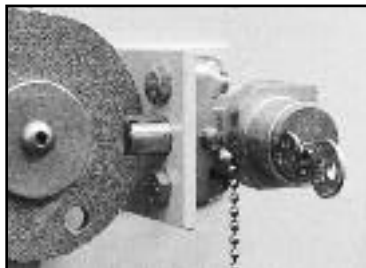
▲ Temperature compensated gauge

Viewing Windows (Standard)

provide a means to visibly verify switch contact position. Single phase or three phase contact viewing is available.



▲ Auxiliary switches



▲ Key interlocks

Key Interlocks (Optional)

may be used as an added safety measure to prevent operation by unauthorized personnel or to assure safe coordination of energized equipment. Switches can be provided with provisions only (two maximum per operating mechanism) or with key interlocks factory installed. Specify locking scheme when ordering, i.e. lock in open, lock in closed or lock in both open and closed position. For key interlocks to be coordinated with other equipment, manufacturer's information must be provided.

Ground Lugs (Optional)

are bronze, eyebolt style for 4/0 maximum conductor cable.

Auxiliary Switches (Optional)

can be included to provide remote indication of contact position. One N.O. and one N.C. contact is supplied and can be wired by G&W or the customer. A maximum of two auxiliary switches can be installed per operating mechanism.

Low SF₆ Remote Monitoring Devices:

1) Low Pressure Warning Devices are factory set at 5 psig and permit remote indication of internal tank pressure. It can also be used for low pressure control lockout. One Form C contact is provided for wiring by the customer.

Recommended for installations where ambient temperature does not fall below 0°F (-15°C).

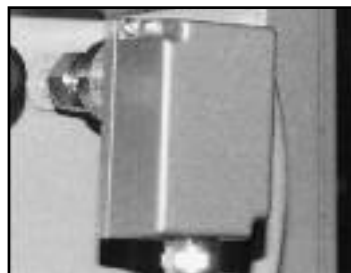


▲ Low pressure warning device



Window Cover (Optional)

Available for Type 1, Type 2, or Type 3 interrupter controls.



▲ SF₆ density switch

2) SF₆ Density Switches

permit remote indication of internal tank gas density to assure proper pressure/temperature operating conditions. One Form C contact is provided for wiring by the customer.

Recommended for installations where ambient temperatures fall below 0°F (-15°C).

ACCERORIES AND OPTIONS

OPTIONS

Select from the following options and add to the appropriate switch specification:

- Stainless steel tank, type 304
- Stainless steel enclosure, type 304 or 316
- Temperature compensating pressure gauge
- Low pressure warning device
- SF₆ density switch
- 4/0 brass ground lug
- Key interlock provisions
- Key interlocks to lock in open position
- Current transformers for load break ways
- Potential transformers for voltage monitoring and/or control power
- Automatic transfer control type ATC451-4
- Motor actuators for remote switch operation
- Auxiliary switches for remote switch position indication
- Stationary switch controls for remote switch operation and SCADA integration
- Portable switch controls for remote switch operation
- Remote terminal units and communication packages for SCADA integration
- Operation counters
- Voltage sensors with 120 VAC output or a contact to indicate presence of voltage
- 200A deepwell bushings
- 600A apparatus bushings
- 600A voltage sensing bushings
- 600A Quik-Change apparatus bushings
- 600A Universal bushings (through 25kV)
- Type 2 vacuum interrupter control including ground fault trip and time delay selector switches (three phase only)
- Type 3 vacuum interrupter control including ground fault trip, inrush restraint, programmable vacuum fluorescent display (VFD) and RS232/485 port
- Type 4 vacuum interrupter control (same as Type 3 with laptop programming only)
- Clear window cover for Type 1, Type 2, or Type 3 interrupter controls
- Submersible NEMA 6P enclosure for vacuum interrupter control
- SEL relays including 751A, 501, 551 and others
- External power / trip for vacuum interrupter control
- Refill kit consisting of regulator, hose and SF₆ bottle