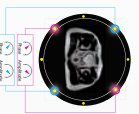


Vantage Titan 3T[™] 1S Edition

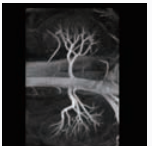
Outstanding image quality

Toshiba implemented the most advanced Multi-phase Transmission technology that guarantees optimal RF distribution and homogeneity in all body regions, including abdomen and cardiac scans. Moreover, the 32-channel Super Slim Coil provides enhanced image quality.



Safety

Toshiba achieves true non-contrast MRA for the entire body
Toshiba's advanced non-contrast MRA method allows exceptional vascular imaging without the use of contrast injection. This advanced Toshiba MR angiography suite eliminates all patient risks and provides economic benefits to your institution.



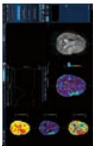
Patient comfort

Large 71cm patient aperture and Passiamo[™]
Toshiba's advanced noise reduction technology, Passiamo, significantly reduces the noise for all types of scans, including MRSA. The large patient aperture in the industry which provides excellent comfort to patients.



Ease of Use

Easy to use Easy to learn
Our M-Flow interface makes Toshiba's suite of MR software remarkably easy to learn and use, enabling all technologists to access its full range of functional MR techniques. The common software platform to our entire MR product line.



Eco Friendly

Reducing system power consumption by "Eco Mode"
The Vantage Titan 3T utilizes a zero Helium boil-off magnet.
Moreover, the total power consumption is reduced by the Eco Mode, certain electronic components are stand-by to reduce power consumption. The scan mode can be resumed in less than 1 second.



Vantage Titan 3T[™] 1S Edition

Magnet	3T High Field Homogeneity Magnet (Zero Helium Boil-off)
Patient Aperture	71 cm
Active Shield Gradient Coil	Super Slim Gradient ¹⁾
Gradient Strength	30 mT/m (Standard Gradient) 45 mT/m (Super Gradient)
Noise Reduction Technology	Passiamo ²⁾
Non-contrast MRA technology	TrueS-Q ³⁾ , FFI, ESR, V-Flow, ASL and more advanced technologies
User interface	M-Flow V3.5
Operation system	Windows [®] 7
Security Solution	• Utilizing physical based security of hardware ⁴⁾ • Meets the requirements of Risk Management Framework (RMF) governed by the Defense Health Agency (DHA) ⁵⁾
Energy Saving Technology	Eco Mode ⁶⁾

1) Super Slim Gradient: Advanced Active Shielded Gradient Coil providing both high-quality images and comfortable examination table for patients.
2) TrueS-Q: TrueS-Q is a non-contrast MRA technology that uses a unique combination of techniques to reduce the need for contrast agents.
3) FFI (Flow Sensitive Inversion Recovery): FFI is a non-contrast MRA technology that uses a unique combination of techniques to reduce the need for contrast agents.
4) Physical based security of hardware: Security program required for MR operations to ensure stable operation of the MR system.
5) Risk Management Framework (RMF): Risk Management Framework (RMF) is a process for identifying, assessing, and controlling risks to an organization's information systems and information.
6) Eco Mode: Function to turn off part of the system to reduce the power consumption, which can be switched to on mode within less than 1 second. Some functions are optional.

Toshiba Medical Systems Corporation, the most innovative health care technology company in the world, has been recognized as the most innovative health care technology company in the world by Frost & Sullivan. Toshiba Medical Systems Corporation is a member of the Toshiba Group, a leading Japanese multinational corporation. Toshiba Medical Systems Corporation is a member of the Toshiba Group, a leading Japanese multinational corporation. Toshiba Medical Systems Corporation is a member of the Toshiba Group, a leading Japanese multinational corporation.

TOSHIBA MEDICAL SYSTEMS CORPORATION
<http://www.toshibamedicalsystems.com>
 © Toshiba Medical Systems Corporation 2015. All rights reserved.
 Design and specifications subject to change without notice.
 MR-000115-01-01-15-02-00

Vantage Titan 3T[™] 1S Edition

TOSHIBA
Leading Innovation >>>

Vantage Titan 3T[™] 1S Edition



Toshiba's Intelligent Solutions enhance clinical performance

Superior and Sophisticated

The combination of True Steep Slim Gradient design and advanced clinical applications of M-Power™ V2.5 provides a truly sophisticated clinical solution.

Streamlined

A full suite of advanced M-Power functionalities maximizes the system productivity.

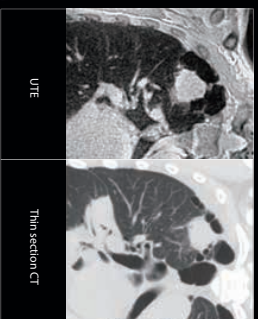
Secure and Serene

Providing safe and reliable examinations with enhanced security, which has received Approval To Operate (ATO) by the United States Air Force.



Advanced Clinical Solutions

The Montage Titan 3T provides a complete suite of routine and advanced clinical solutions, including head-to-toe 2D and 3D morphological imaging with high contrast-to-noise ratio and high spatial resolution.

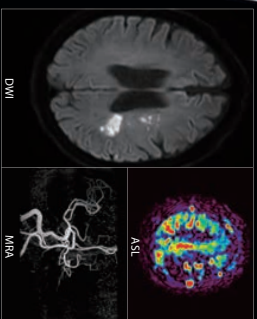


UTE

Thin section CT

UTE (Ultrafast TE) The ultra-fast TE, low kVp, low-dose UTE acquisition offers a superior image quality for the visualization of the lung, which is the lung vessels, such as the lung.

(Courtesy of Keio University Hospital, Japan)



DWI

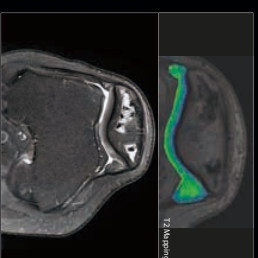
ASL

MFA

Outstanding DWI

Thanks to the combination of advanced gradient hardware quality and sequence optimization, the excellent DWI scans are achieved on any center.

(Courtesy of FRI, Ika Health University Hospital, Japan)

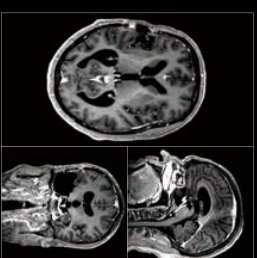


T2 Mapping

High-resolution MSK solution

High-resolution MSK solution can provide excellent high-resolution images. Various advanced post-processing can be utilized.

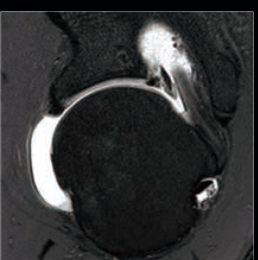
(Courtesy of Clinic Cera, Spain)



MP RAGE

Investigation-ready, parallel FFE-DI sequence with variable flip angles. T1-weighted contrast.

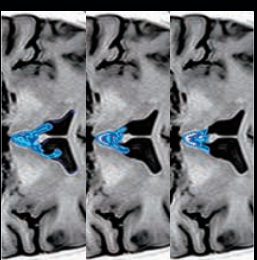
(Courtesy of YNU University Medical Center, Netherlands)



Excellent off-center imaging

Excellent off-center imaging of multiple slices in the uniform first in the case of off-center imaging. In the case of the shoulder of the elbow.

(Courtesy of Clinic Cera, Spain)



Non-contrast CSF Dynamics Imaging

CSF dynamics can be analyzed by selectively labeling the flow with RF pulses. T1-weighted contrast.

(Courtesy of FRI, Ika Health University Hospital, Japan)