

Crawler Excavator

R 934 C
Litronic®

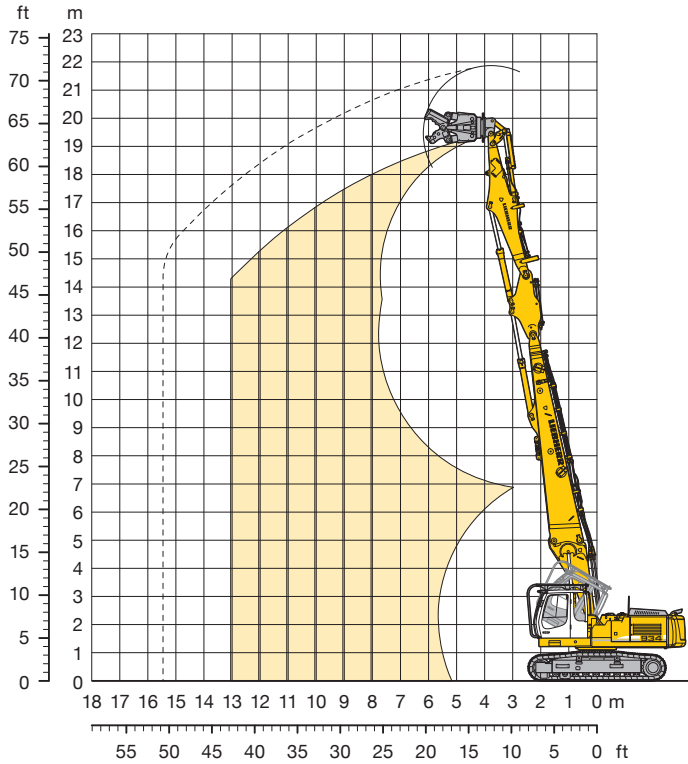
Attachment Information

Liebherr Crawler Excavator
with Demolition Attachment



LIEBHERR

Demolition Attachment 19.50 m



To order a complete machine you need the following

- Cab tiltable 30°
- Hydraulic control for rotary drive
- Hydraulic control for hammer/shears with Tool-Control and Liebherr-Demolition-Control (LDC)
- Hoist cylinders with regeneration plus and load holding valves

For demolition application, following additional items are also required:

- Demolition boom 7.50 m
- Intermediate boom 2.10 m
- Demolition stick 5.20 m with linkage 922 Li
- Tool (backhoe bucket, demolition shears, concrete nibblers, etc.)
- Storage racks for demolition attachment
- Integral protection grid FOPS

Optional

- Integral protection grid for cab on tilting device FOPS
- Hydraulic accessory for quick change adapter on basic boom

Reach Limitation

8 m 9 m 10 m 11 m 12 m 13 m

Demolition boom 7.50 m + Intermediate boom + Demolition stick 5.20 m	Tool weight* in t					
	8 m	9 m	10 m	11 m	12 m	13 m
NLC-Undercarriage	2.00	1.75	1.50	1.00	-	-
LC-Undercarriage	2.25	2.00	1.75	1.25	-	-
VH-HD-Undercarriage	2.50	2.50	2.50	2.00	1.75	1.50

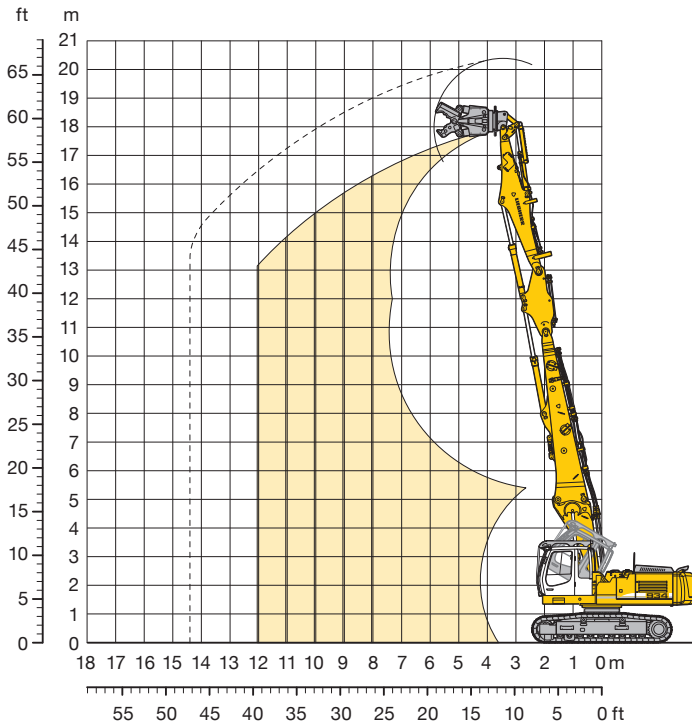
* included quick change adapter, adapter plate and tool

Operating Weight and Ground Pressure

Operating weight includes basic machine with heavy duty counterweight 7.5 t (6.5 t for the VH-HD-Undercarriage), the cab tiltable 30°, demolition boom 7.50 m, intermediate boom, demolition stick 5.20 m standard and working tool 1.5 t.

Undercarriage		NLC		LC		VH-HD
		mm	kg	mm	kg	kg/cm ²
Pad width	mm	600	750	600	750	600
Weight	kg	41,350	42,300	41,450	42,400	47,550
Ground pressure	kg/cm ²	0.80	0.65	0.80	0.65	0.90

Demolition Attachment 18.00 m



To order a complete machine you need the following

- Cab tiltable 30°
- Hydraulic control for rotary drive
- Hydraulic control for hammer/shears with Tool-Control and Liebherr-Demolition-Control (LDC)
- Hoist cylinders with regeneration plus and load holding valves

For demolition application, following additional items are also required:

- Demolition boom 6.00 m
- Intermediate boom 2.10 m
- Demolition stick 5.20 m with linkage 922 Li
- Tool (backhoe bucket, demolition shears, concrete nibblers, etc.)
- Storage racks for demolition attachment
- Integral protection grid FOPS

Optional

- Integral protection grid for cab on tilting device FOPS
- Hydraulic accessory for quick change adapter on basic boom

Reach Limitation

	8 m	9 m	10 m	11 m	12 m
Demolition boom 6.00 m + Intermediate boom + Demolition stick 5.20 m	Tool weight* in t				
NLC-Undercarriage	2.50	2.00	1.50	1.25	-
LC-Undercarriage	2.50	2.25	1.75	1.50	-
VH-HD-Undercarriage	2.50	2.50	2.50	2.00	1.50

* included quick change adapter, adapter plate and tool

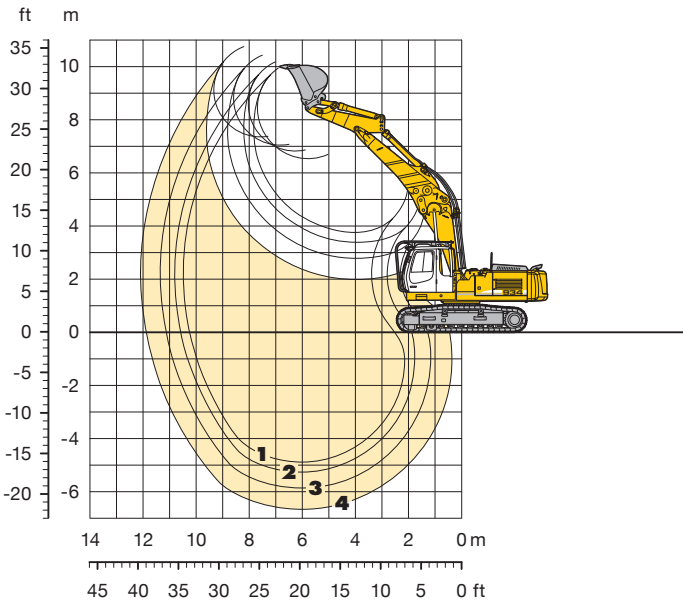
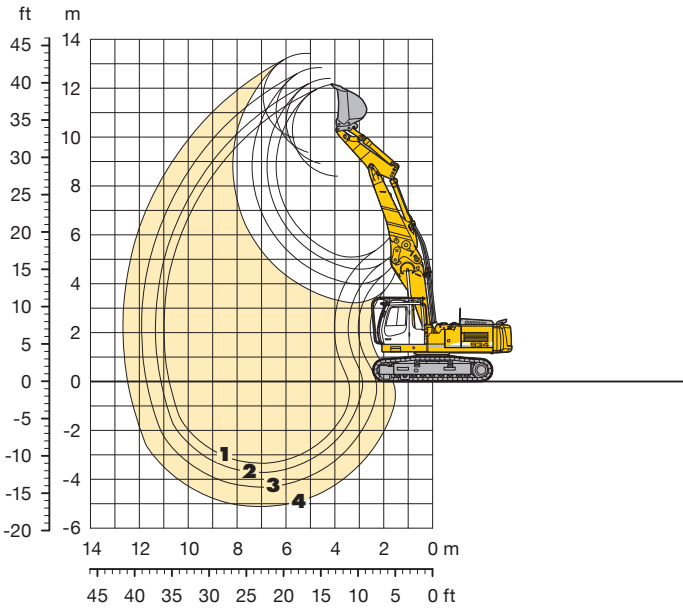
Operating Weight and Ground Pressure

Operating weight includes basic machine with heavy duty counterweight 7.5 t (6.5 t for the VH-HD-Undercarriage), the cab tiltable 30°, demolition boom 6.00 m, intermediate boom, demolition stick 5.20 m standard and working tool 1.5 t.

Undercarriage		NLC	LC	VH-HD
Pad width	mm	600	750	600
Weight	kg	40,900	41,850	41,000
Ground pressure	kg/cm ²	0.79	0.64	0.79

Backhoe Attachment

with Main Boom 4.25 m



For backhoe application, following items are required

Main boom 4.25 m
Stick 2.00 m, 2.50 m, 3.10 m, 3.90 m
Storage racks for backhoe attachment

Optional

Hydraulic lines AHS* for main boom 4.25 m
Hydraulic lines AHS* for stick 2.00 m, 2.50 m, 3.10 m, 3.90 m
Hydraulic lines rotary drive for main boom 4.25 m
Hydraulic lines rotary drive for stick 2.00 m, 2.50 m, 3.10 m, 3.90 m
Backhoe bucket – as required

* AHS = hydraulic control for hydraulic accessory

Digging Envelope Main Boom

pinned in upper (in lower) bearing		1	2	3	4
Stick lengths	m	2.00	2.50	3.10	3.90
Max. digging depth	m	3.28 (4.82)	3.65 (5.19)	4.25 (5.79)	5.05 (6.59)
Max. reach at ground level	m	10.75 (10.23)	11.10 (10.55)	11.69 (11.11)	12.47 (11.87)
Max. dump height	m	8.47 (6.52)	8.99 (6.90)	9.44 (7.12)	10.04 (7.42)
Max. teeth height	m	12.23 (10.08)	12.47 (10.27)	12.91 (10.52)	13.49 (10.84)

Digging Forces

with Quick Change Adapter		1	2	3	4
Digging force ISO	kN	161	137	119	102
	t	16.4	13.9	12.1	10.4
Breakout force ISO	kN	187	155	155	155
	t	19.1	15.8	15.8	15.8

without Quick Change Adapter

Digging force ISO	kN	170	146	126	106
	t	17.3	14.9	12.8	10.8
Breakout force ISO	kN	213	184	184	184
	t	22.1	18.8	18.8	18.8

Max. breakout force with ripper bucket

264 kN (27.9 t)

Operating Weight and Ground Pressure

Operating weight includes basic machine with heavy duty counterweight 7.5 t (6.5 t for the VH-HD-Undercarriage), the cab tiltable 30°, main boom 4.25 m, stick 2.50 m, quick change adapter 66 and backhoe bucket 1.00 m² (960 kg).

Undercarriage		NLC		LC		VH-HD
Pad width	mm	600	750	600	750	600
Weight	kg	38,800	39,750	38,900	39,850	45,000
Ground pressure	kg/cm ²	0.75	0.61	0.75	0.61	0.85

Buckets Machine stability per ISO 10567* (75% of tipping capacity)

Cutting width mm	Capacity ISO 7451 m ³	Weight kg	NLC-Undercarriage				LC-Undercarriage				VH-HD-Undercarriage			
			Stick length (m)				Stick length (m)				Stick length (m)			
			2.00	2.50	3.10	3.90	2.00	2.50	3.10	3.90	2.00	2.50	3.10	3.90
1,250 ¹⁾	1.25	1,070	▲	□	□	▲	□	□	□	▲	□	□	□	
1,400 ¹⁾	1.45	1,140	▲	□	▲	▲	□	□	▲	▲	□	□	▲	
1,550 ¹⁾	1.60	1,210	▲	▲	■	▲	▲	■	▲	▲	□	■	■	
1,250 ²⁾	1.25	1,090	▲	□	□	▲	□	□	□	▲	□	□	□	
1,400 ²⁾	1.45	1,160	▲	□	▲	▲	□	□	■	▲	□	□	■	
1,550 ²⁾	1.60	1,230	▲	▲	■	▲	▲	▲	▲	▲	▲	▲	▲	
1,200 ³⁾	1.25	1,280	□	▲	▲	▲	▲	▲	▲	□	▲	▲	▲	
1,350 ³⁾	1.50	1,370	▲	▲	▲	▲	▲	▲	▲	□	▲	▲	▲	
1,500 ³⁾	1.75	1,460	■	▲	▲	▲	▲	▲	▲	□	▲	▲	▲	
1,650 ³⁾	2.00	1,580	▲	▲	▲	▲	▲	▲	▲	□	▲	▲	▲	
1,200 ³⁾	1.25	1,240	□	▲	▲	▲	□	▲	▲	□	▲	▲	▲	
1,350 ³⁾	1.50	1,330	▲	▲	▲	▲	▲	▲	▲	□	▲	▲	▲	
1,500 ³⁾	1.75	1,420	■	▲	▲	▲	▲	▲	▲	□	▲	▲	▲	
1,650 ³⁾	2.00	1,540	▲	▲	▲	▲	▲	▲	▲	□	▲	▲	▲	

* Indicated loads are based on ISO 10567 max. stick length, lifted 360° on firm

¹⁾ Bucket without quick change adapter with teeth Z 50 ²⁾ Bucket with quick change adapter with teeth Z 50 ³⁾ Bucket R 944 C Litronic with teeth Z 50

Other backhoes available on request

Max. material weight □ = ≤ 1.8 t/m³, ▲ = ≤ 1.5 t/m³, ■ = ≤ 1.2 t/m³, ▴ = not authorized

Lift Capacities

with Main Boom 4.25 m

Stick 2.00 m

Height (m)	Under-carriage	Radius of load from centerline of machine (m)					
		3.0	4.5	6.0	7.5	9.0	10.5
10.5	NLC						
	LC						
	VH-HD						
9.0	NLC			8.4# (8.4#)			
	LC			8.4# (8.4#)			
	VH-HD			8.5# (8.5#)			
7.5	NLC			8.6 (10.0#)	5.7 (7.7#)		
	LC			9.3 (10.0#)	6.2 (7.7#)		
	VH-HD			10.0# (10.0#)	7.8# (7.8#)		
6.0	NLC		12.7 (14.0#)	8.0 (10.9#)	5.5 (9.2#)		
	LC		14.0# (14.0#)	8.8 (10.9#)	6.0 (9.2#)		
	VH-HD		14.1# (14.1#)	10.9# (10.9#)	8.6 (9.2#)		
4.5	NLC			7.2 (11.8#)	5.1 (9.2)	3.7 (6.8)	
	LC			8.0 (11.8#)	5.7 (9.2)	4.1 (6.8)	
	VH-HD			11.5 (11.9#)	8.2 (9.6#)	6.1 (7.6#)	
3.0	NLC			6.5 (12.3)	4.8 (8.7)	3.6 (6.6)	
	LC			7.2 (12.3)	5.3 (8.8)	4.0 (6.6)	
	VH-HD			10.7 (12.7#)	7.8 (10.0#)	5.9 (7.8)	
1.5	NLC			6.0 (11.7)	4.5 (8.4)	3.4 (6.4)	
	LC			6.8 (11.8)	5.0 (8.4)	3.8 (6.5)	
	VH-HD			10.3 (13.0#)	7.5 (10.0)	5.8 (7.7)	
0	NLC			5.9 (11.6)	4.3 (8.3)	3.4 (6.4)	
	LC			6.6 (11.6)	4.8 (8.3)	3.8 (6.4)	
	VH-HD			10.1 (12.5#)	7.3 (9.8)	5.7 (7.6)	
- 1.5	NLC			6.0 (11.3#)	4.4 (8.3)		
	LC			6.7 (11.3#)	4.9 (8.3)		
	VH-HD			10.2 (11.2#)	7.4 (9.0#)		
- 3.0	NLC						
	LC						
	VH-HD						
- 4.5	NLC						
	LC						
	VH-HD						

Stick 2.50 m

Height (m)	Under-carriage	Radius of load from centerline of machine (m)					
		3.0	4.5	6.0	7.5	9.0	10.5
10.5	NLC						
	LC						
	VH-HD						
9.0	NLC				7.0# (7.0#)		
	LC				7.0# (7.0#)		
	VH-HD				7.1# (7.1#)		
7.5	NLC				7.9# (7.9#)	6.0 (6.8#)	
	LC				7.9# (7.9#)	6.6 (6.8#)	
	VH-HD				8.0# (8.0#)	6.9# (6.9#)	
6.0	NLC						
	LC				11.2# (11.2#)	8.5 (9.9#)	5.8 (8.5#)
	VH-HD				11.6# (11.6#)	9.2 (9.9#)	6.4 (8.5#)
4.5	NLC						
	LC				11.7 (15.9#)	7.7 (11.8#)	5.5 (9.5)
	VH-HD				13.0 (15.9#)	8.5 (11.8#)	6.0 (9.6)
3.0	NLC						
	LC				7.7# (7.7#)	7.0 (12.8#)	5.1 (9.1)
	VH-HD				7.7# (7.7#)	7.7 (12.8#)	5.6 (9.1)
1.5	NLC						
	LC						
	VH-HD						
0	NLC						
	LC				8.6# (8.6#)	6.2 (11.9)	4.6 (8.5)
	VH-HD				8.6# (8.6#)	6.9 (12.0)	5.1 (8.6)
- 1.5	NLC						
	LC						
	VH-HD						
- 3.0	NLC						
	LC						
	VH-HD						
- 4.5	NLC						
	LC						
	VH-HD						

Stick 3.10 m

Height (m)	Under-carriage	Radius of load from centerline of machine (m)					
		3.0	4.5	6.0	7.5	9.0	10.5
10.5	NLC			4.8# (4.8#)			
	LC			4.8# (4.8#)			
	VH-HD			4.9# (4.9#)			
9.0	NLC				4.7# (4.7#)		
	LC				4.7# (4.7#)		
	VH-HD				4.8# (4.8#)		
7.5	NLC			6.2# (6.2#)	6.0# (6.0#)		
	LC			6.2# (6.2#)	6.0# (6.0#)		
	VH-HD			6.3# (6.3#)	6.0# (6.0#)	3.5# (3.5#)	
6.0	NLC			7.3# (7.3#)	6.0 (6.9#)	4.3 (5.5#)	
	LC			7.3# (7.3#)	6.5 (6.9#)	4.7 (5.5#)	
	VH-HD			7.4# (7.4#)	7.0# (7.0#)	5.6# (5.6#)	
4.5	NLC						
	LC			12.4 (14.8#)	8.0 (11.2#)	5.6 (8.9#)	4.1 (6.8#)
	VH-HD			13.7 (14.8#)	8.7 (11.2#)	6.1 (8.9#)	4.5 (6.8#)
3.0	NLC						
	LC						
	VH-HD						
1.5	NLC						
	LC						
	VH-HD						
0	NLC						
	LC						
	VH-HD						
- 1.5	NLC						
	LC						
	VH-HD						
- 3.0	NLC						
	LC						
	VH-HD						
- 4.5	NLC						
	LC						
	VH-HD						

Stick 3.90 m

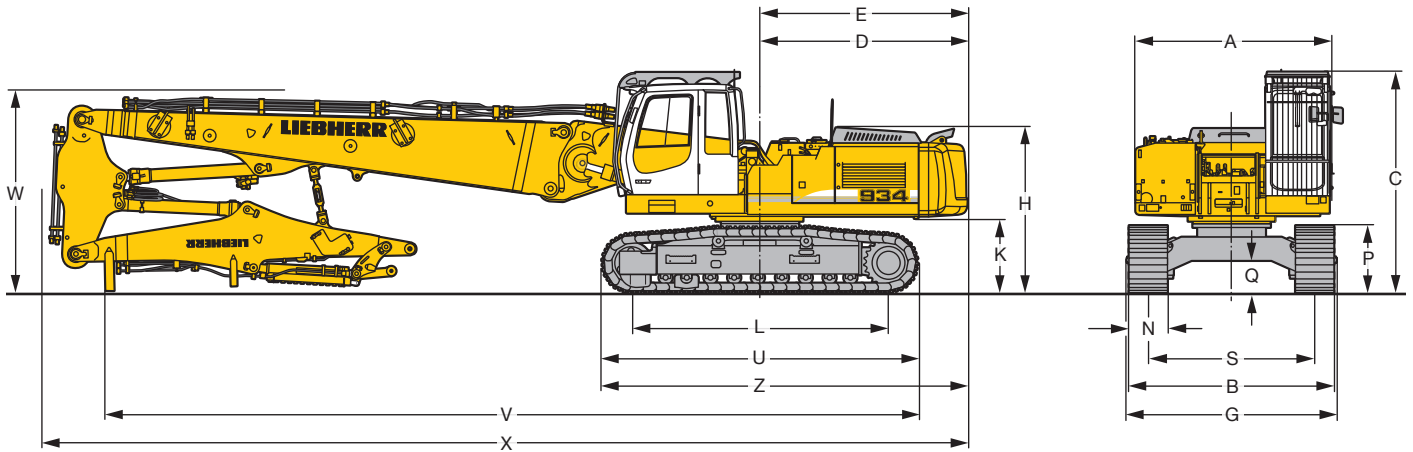
Height (m)	Under-carriage	Radius of load from centerline of machine (m)					
		3.0	4.5	6.0	7.5	9.0	10.5
10.5	NLC						
	LC						
	VH-HD						
9.0	NLC						
	LC					4.5# (4.5#)	
	VH-HD					4.5# (4.5#)	
7.5	NLC						
	LC					4.8# (4.8#)	4.2# (4.2#)
	VH-HD					4.8# (4.8#)	4.2# (4.2#)
6.0	NLC						
	LC					5.1# (5.1#)	5.3# (5.3#)
	VH-HD					5.1# (5.1#)	5.3# (5.3#)
4.5	NLC						
	LC					8.3# (8.3#)	7.2# (7.2#)
	VH-HD					8.3# (8.3#)	7.2# (7.2#)
3.0	NLC						
	LC					11.4 (15.8#)	7.5 (11.6#)
	VH-HD					12.7 (15.8#)	8.3 (11.6#)
1.5	NLC						
	LC					10.0 (11.9#)	6.7 (12.6)
	VH-HD					11.2 (11.9#)	7.5 (12.6)
0	NLC						
	LC					3.4# (3.4#)	9.3 (10.0#)
	VH-HD					3.4# (3.4#)	10.0# (10.0#)
- 1.5	NLC						
	LC						
	VH-HD						
- 3.0	NLC						
	LC						
	VH-HD						
- 4.5	NLC						
	LC						
	VH-HD						

The lift capacities on the load hook of the Liebherr quick change adapter 66 without attachment are stated in metric tonnes (t), and can be lifted 360° on firm, level supporting surface. Values quoted in brackets are valid for the undercarriage when in longitudinal position. Capacities are valid for 600 mm wide triple grouser pads. Indicated loads are based on ISO 10567 standard and do not exceed 75 % of tipping or 87 % of hydraulic capacity (indicated via #). Maximum load for the quick change adapter's load hook is 12 t. Without quick change adapter the lift capacities will increase by 330 kg/450 kg*, without bucket cylinder, link and lever they increase by an additional 410 kg/590 kg*. Lifting capacity of the excavator is limited by machine stability, hydraulic capacity and maximum permissible load of the load hook.

According to European Standard, EN 474-5: In the European Union excavators have to be equipped with an overload warning device, a load diagram and automatic check valves on the hoist cylinders, when they are used for lifting operations which require the use of lifting accessories.

* capacities only for stick 2.00 m

Dimensions

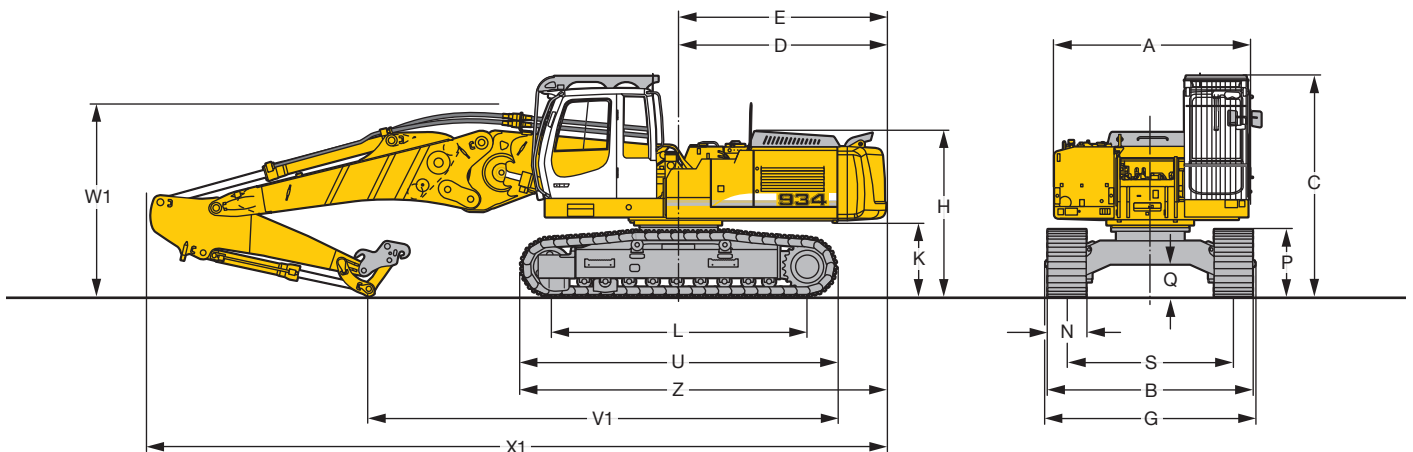
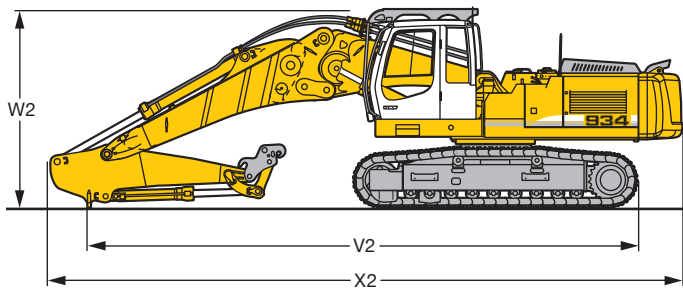


	NLC	mm	LC	mm	VH-HD	mm
A		3,050		3,050		3,050
C		3,440		3,440		3,500
D		3,236		3,236		3,145
E		3,236		3,236		3,145
H		2,590		2,590		2,650
K		1,150		1,150		1,210
L		4,000		4,000		4,100
P		1,046		1,046		1,140
Q		496		496		437
U		4,920		4,920		5,030
S		2,390		2,590		2,300 – 3,200
N	500	600	750	500	600	750
B	2,958	2,990	3,140	3,158	3,190	3,340
G	2,976	2,976	3,276	3,176	3,176	3,476
Z		5,700		5,700		5,670

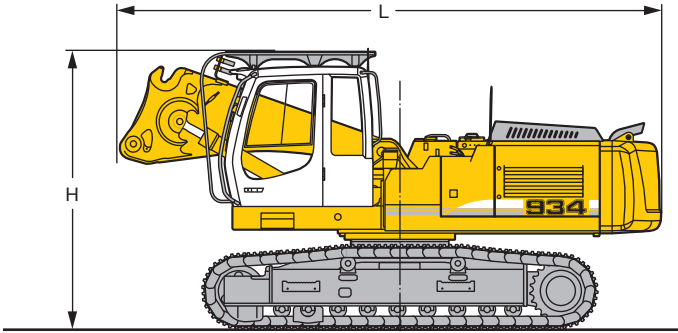
Demolition Boom 6.00 m						
	NLC	mm	LC	mm	VH-HD	mm
V		11,150		11,150		11,200
W		3,150		3,150		3,100
X		12,900		12,900		12,800

Demolition Boom 7.50 m						
	NLC	mm	LC	mm	VH-HD	mm
V		12,650		12,650		12,600
W		3,150		3,150		3,100
X		14,400		14,400		14,300

	Stick Lengths	NLC	LC	VH-HD
	m	mm	mm	mm
V1	2.00	8,200	8,200	8,250
	2.50	7,300	7,300	7,350
	3.10	6,900	6,900	6,950
	3.90	6,400	6,400	6,450
W1	2.00	3,200	3,200	3,200
	2.50	3,000	3,000	3,000
	3.10	3,200	3,200	3,200
X1	2.00	3,400	3,400	3,400
	2.00	11,650	11,650	11,550
	2.50	11,500	11,500	11,400
V2	3.10	11,550	11,550	11,450
	3.90	11,650	11,650	11,550
	2.00	7,400	7,400	7,450
	2.50	9,500	9,500	9,550
W2	3.10	8,900	8,900	8,950
	3.90	5,250	5,250	5,300
	2.00	3,600	3,600	3,600
	2.50	3,400	3,400	3,400
X2	3.10	3,400	3,400	3,400
	3.90	3,450	3,450	3,450
	2.00	11,150	11,150	11,050
	2.50	11,000	11,000	10,900
	3.10	11,000	11,000	10,900
	3.90	11,000	11,000	10,900

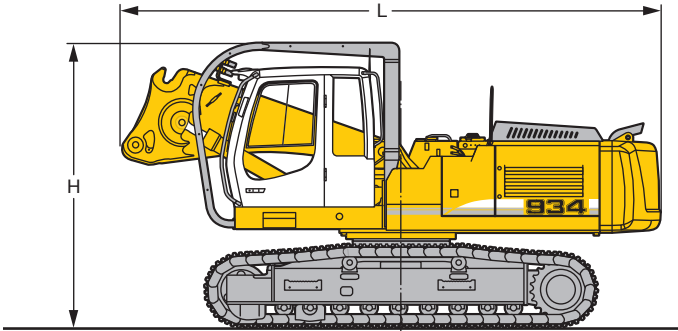


Dimensions and Weights



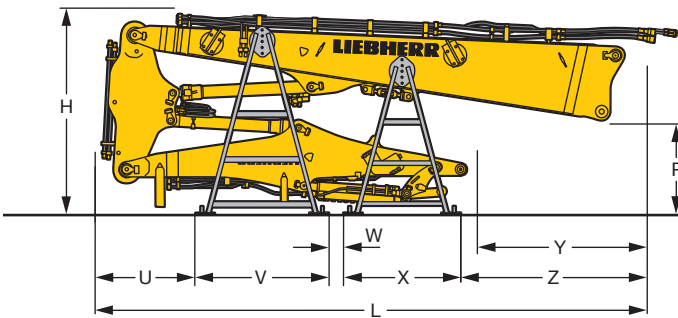
Basic machine with cab tiltable 30° and integral protection grid

Undercarriage		NLC		LC	VH-HD	
Pad width	mm	600	750	600	750	600
L	mm	6,750	6,750	6,750	6,750	6,650
H	mm	3,440	3,440	3,440	3,440	3,500
Weight	kg	32,750	33,700	32,850	33,800	38,950



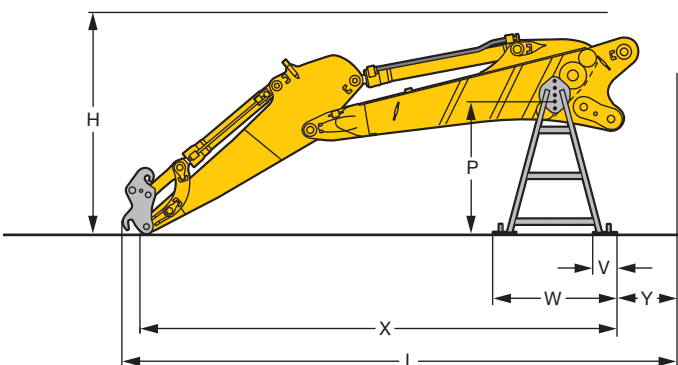
Basic machine with cab tiltable 30° and integral protection grid on tilting device

Undercarriage		NLC		LC	VH-HD	
Pad width	mm	600	750	600	750	600
L	mm	6,750	6,750	6,750	6,750	6,650
H	mm	3,540	3,540	3,540	3,540	3,600
Weight	kg	33,100	34,050	33,200	34,150	39,300



Demolition Attachment with Support

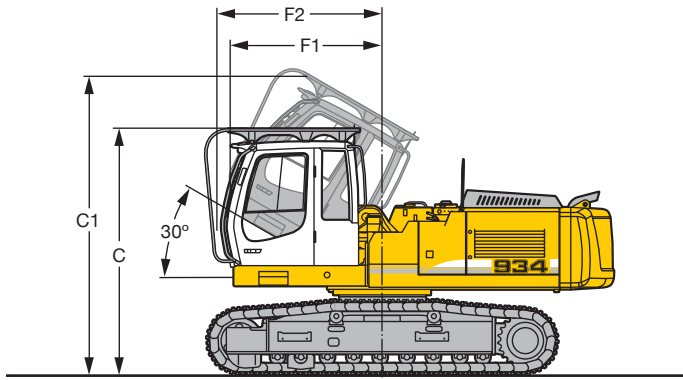
Demolition Boom	m	6.00	7.50
L Length	mm	7,000	8,600
H Height	mm	3,400	3,200
P	mm	1,500	1,400
U	mm	550	1,565
V	mm	2,080	2,080
W	mm	826	226
X	mm	1,830	1,830
Y	mm	1,200	2,650
Z	mm	1,715	2,900
Width	mm	2,400	2,400
Weight without working tool	kg	7,350	7,800



Backhoe Attachment with Supports with Quick Change Adapter 66

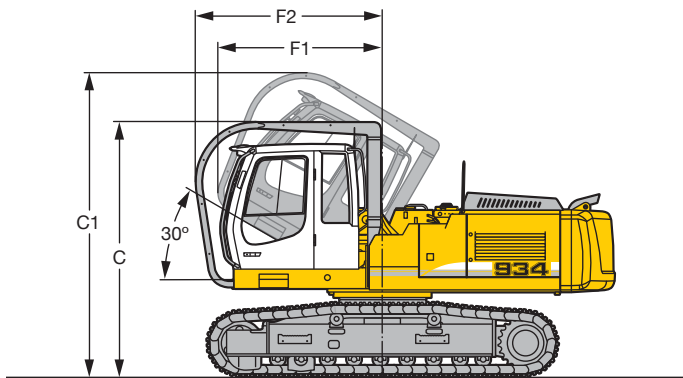
Main Boom 4.25 m		Stick lengths			
L Length	mm	6,800	7,300	7,900	8,700
H Height	mm	2,900	2,900	2,900	2,900
P	mm	1,730	1,730	1,820	1,820
V	mm	300	300	300	300
W	mm	1,620	1,620	1,620	1,620
X	mm	5,750	6,250	6,850	7,650
Y	mm	800	800	800	800
Width	mm	2,400	2,400	2,400	2,400
Weight without bucket	kg	5,800	5,450	5,600	5,750

Choice of Cab Elevations



Version tiltable 30° with integral protection grid

Undercarriage		NLC	LC	VH-HD
C	mm	3,440	3,440	3,500
C1	mm	4,260	4,260	4,320
F1	mm	2,140	2,140	2,140
F2	mm	2,475	2,475	2,475



Version tiltable 30° with integral protection grid on tilting device

Undercarriage		NLC	LC	VH-HD
C	mm	3,540	3,540	3,600
C1	mm	4,240	4,240	4,300
F1	mm	2,300	2,300	2,300
F2	mm	2,600	2,600	2,600